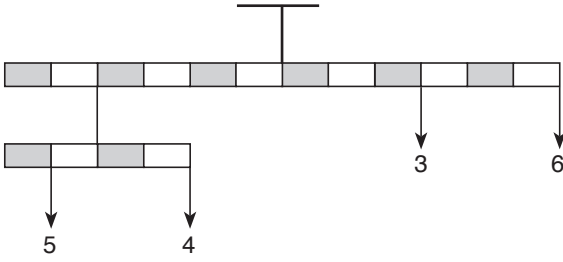


8.

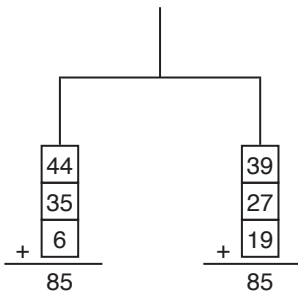


Cevap: A

9. 112123123412345123...56123...67123...78123...89123...
10123...1011123...101112123...10111213
26 tane 1 rakamı vardır.

Cevap: C

10.



O halde 12 sayısına ihtiyaç yoktur.

Cevap: B

$$11. \boxed{X} \boxed{Y} * \boxed{Z} \boxed{t} = x.z - \frac{y}{z} - t^2$$

$$\begin{aligned} \boxed{2} \boxed{4} * \boxed{5} \boxed{1} &= 2.5 - \frac{4}{2} - 1^2 \\ &= 10 - 2 - 1 \\ &= 7 \end{aligned}$$

Cevap: C

$$12. \boxed{X} \boxed{Y} * \boxed{Z} \boxed{t} = x.z - \frac{y}{2} - t^2$$

$$\begin{aligned} \boxed{4} \boxed{6} * \boxed{x} \boxed{2} &= 4.x - \frac{6}{2} - 2^2 = 9 \\ \Rightarrow 4x - 3 - 4 &= 9 \\ 4x &= 9 + 7 \\ 4x &= 16 \\ x &= 4 \end{aligned}$$

Cevap: B

$$13. \boxed{X} \boxed{4} * \boxed{Y} \boxed{4} = 6$$

$$x.y - \frac{4}{2} - 4^2 = 6$$

$$x.y - 2 - 16 = 6$$

$$x.y = 6 + 18 = 24$$

$$\downarrow \downarrow$$

$$4 \quad 6$$

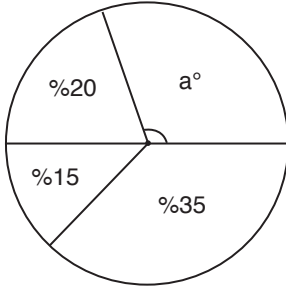
$$3 \quad 8$$

$$x + y = 3 + 8 = 11$$

x ve y'nin rakam olduğunu unutma

Cevap: D

14.



$$\Rightarrow a = \%30 -$$

$$\%100 \quad 360^\circ$$

$$\%30 \quad a$$

$$a = \frac{360 \cdot 30}{100} = 108^\circ \text{ bulunur.}$$

Cevap: C

$$15. \begin{array}{cccccccccccc} 7 & 5 & 4 & 3 & 1 & 2 & 8 & 7 & 5 & 4 & 3 & 1 & 2 & 8 & \dots \\ 1 & 2 & 3 & 4 & 5 & 6 & 7 & & & & & & & & \end{array}$$

7 rakamda bir tekrar başa dönmekte.

$$\begin{array}{r} 132 \overline{) 7} \\ - 7 \\ \hline 62 \\ - 56 \\ \hline \text{Kalan} = 6 \end{array}$$

O halde 6. rakam 2

Cevap: D

$$16. (371, 53),$$

$$\downarrow$$

$$\frac{371}{53} = 7$$

$$(133, 19),$$

$$\downarrow$$

$$\frac{133}{19} = 7$$

$$(70, A)$$

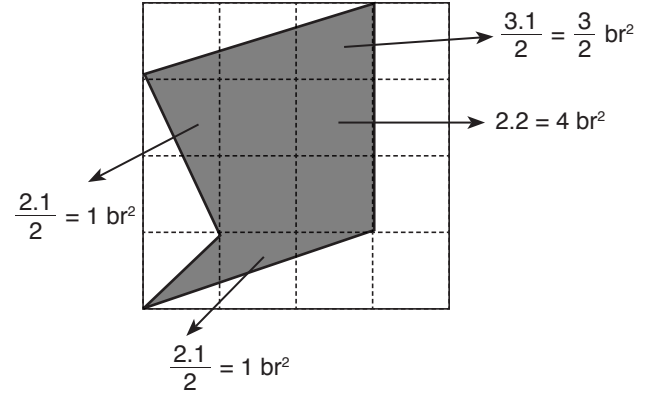
$$\downarrow$$

$$\frac{70}{A} = 7$$

$$\Rightarrow A = \frac{70}{7} = 10$$

Cevap: C

17.



O halde toplam taralı alan

$$1 + 1 + 4 + \frac{3}{2} = 6 + \frac{3}{2} = \frac{15}{2} \text{ br}^2$$

Cevap: A

$$16. (371, 53),$$

$$\downarrow$$

$$\frac{371}{53} = 7$$

$$(133, 19),$$

$$\downarrow$$

$$\frac{133}{19} = 7$$

$$(70, A)$$

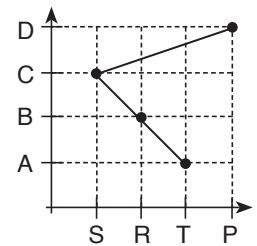
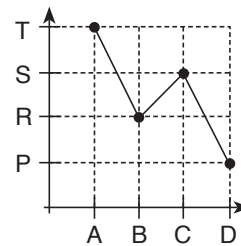
$$\downarrow$$

$$\frac{70}{A} = 7$$

$$\Rightarrow A = \frac{70}{7} = 10$$

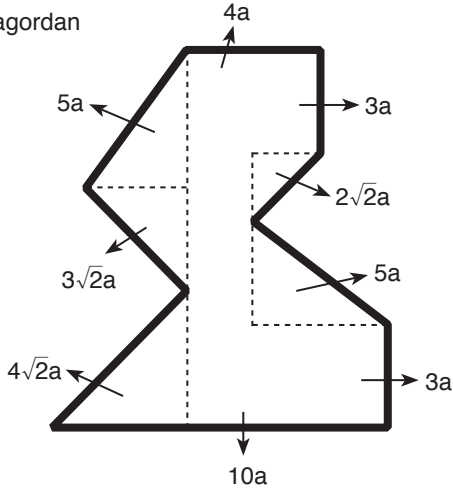
Cevap: C

18.



Cevap: D

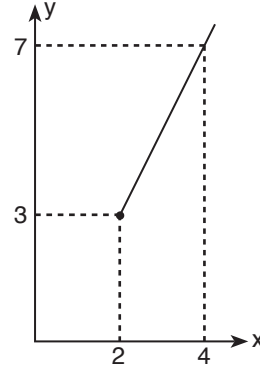
19. Pisagordan



$$\begin{aligned} \text{Ç} &= 5a + 3\sqrt{2}a + 4\sqrt{2}a + 10a + 3a + 5a + 22a + 3a + 4a \\ \text{Ç} &= (30 + 9\sqrt{2})a \end{aligned}$$

Cevap: E

20.



$$\begin{aligned} x &= 23, \\ y &= B, \\ \Rightarrow A &= \%? \end{aligned}$$

x	y
2	3
4	7
6	11
⋮	⋮
22	43
23	45

$$Y = B = 45^\circ$$

$$A + 27^\circ + 45^\circ = 180^\circ$$

$$A = 108^\circ$$

%10	360°
%x	108°

$$x = \frac{100 \cdot 108}{360} = 30$$

Cevap: A